

Classic Lash Course Companion



Workbook

Juliet
Knight

By U.K. Lash Specialist



Elite eyelash
extensions

Here's the boring but necessary legal bit. . .

Please don't infringe or breach my Copyright.
It's illegal and it's not a complement.

This book 'Classic Lash Course Companion Workbook ' (Version 1.0)
has been written solely by Julie Knight.

All illustrations have been created by Julie Knight or commissioned
exclusively by Julie Knight who is the Copyright holder.

First available in 2022 by Julie Knight of JK Beauty Limited, originally trading
as the Eye by i Academy and then Elite Eyelash Extensions® since 2017.

All rights reserved.

Unauthorised copying will constitute an infringement of copyright.

No part of this book may be reproduced, photocopied, electronically
transferred or transmitted by any means without prior permission from the
copyright holder (that's me).

Selling, distributing, hiring or lending is strictly prohibited without prior
permission from the copyright holder (me again!).

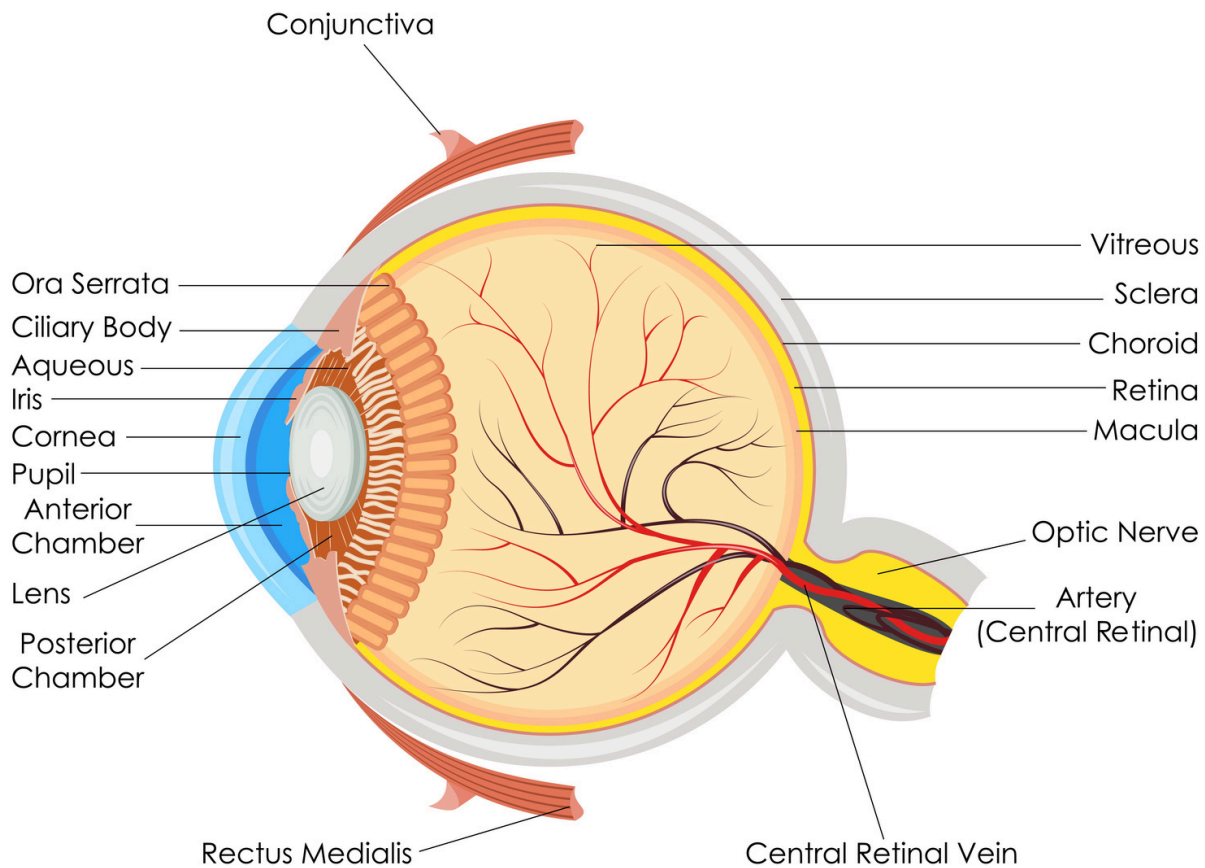
Please remember that this book is for your own personal use only.
It is not intended to act as a substitute for
professional training and certification.

All content is subject Copyright © 2023 Julie Knight

www.eliteeyelashextensions.co.uk

Eyes

Our eyes receive information that's sent along the optic nerve for the brain to process.



Quick Quiz. Match the name to its function

Conjunctiva	Skin protecting the surface of the eye ('whites'), except the cornea.
Pupil	Clear skin covering the iris and pupil at the front of the eye.
Lens	Lining the outside / front of the eye.
Sclera	Allows light to enter eye.
Cornea	Coloured part that controls the amount of light entering the eye.
Iris	Focuses light to the retina.

Eyelids

- Protect the eyes - helps to keep foreign bodies at bay
- Spread tears through blinking
- Thin skin and highest number of sebaceous glands that secrete oily sebum that waterproofs the skin (lids can feel greasy)
- Different shapes / characteristics
 - with or without a crease
 - hooded due to bone structure or aging skin
 - asymmetrical (uneven) such as higher set crease on one eye or it's more hooded)

Quick Quiz. Describe what shapes / characteristics you see

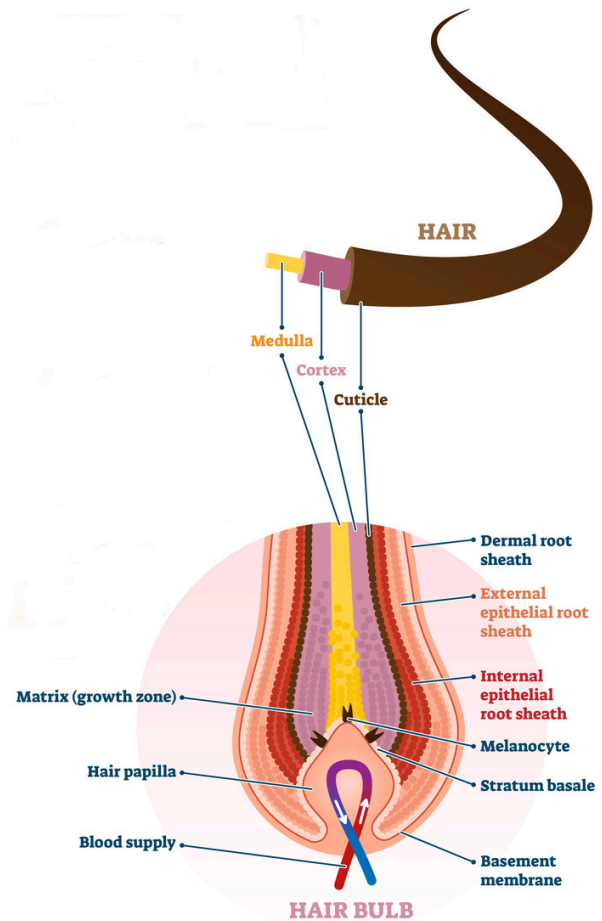
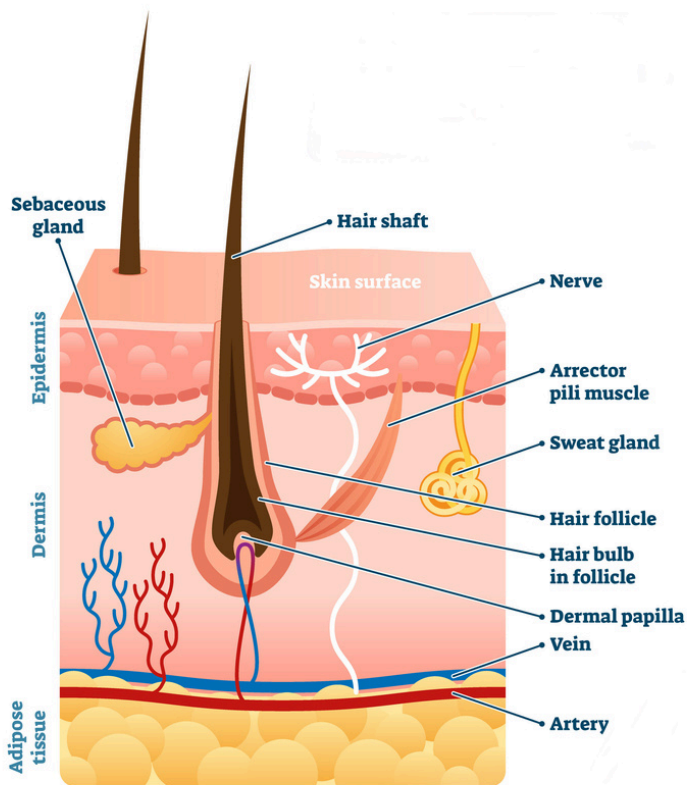








Eyelashes



- Lashes grow from **follicles** along the lid in the **dermis**.
- Guides foreign bodies away from the eyes to protect them, hence the direction of curl.
- Spontaneously closes the eyelid when touched.
- 10% water and 90% Keratin (hard-wearing protein) with melanin (colour).

Quick Quiz. Match the name to its function

Medulla

Large structure at the base of the hair follicle where the growth takes place.

Cuticle

Comprises of growing cells that divide in its lower part and then pushes up.

Bulb

Cells make the melanin pigment.

Papilla

Hard, outermost part. Dead cells overlap into layers to form scales.

Cortex

The middle layer. Comprises of keratin fibers and melanin.

Melanocyte

The inner most part that contain cells.

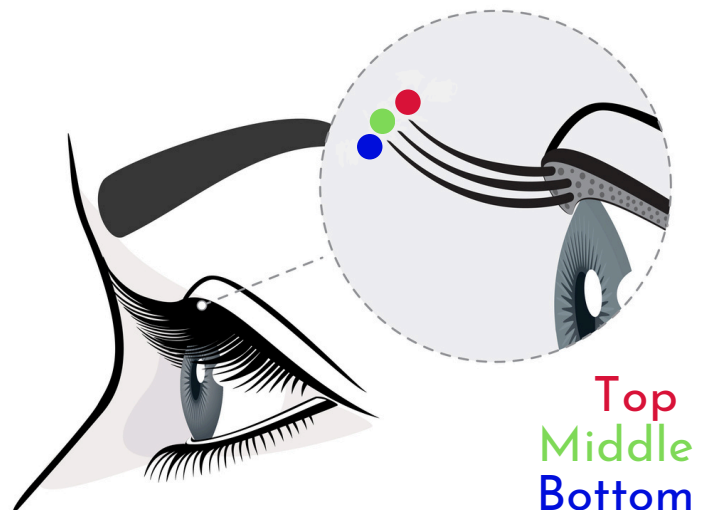
Charactoristics

- Around **90** to **160** eye
- Average **6- 9mm** long
- Average **0.05 - 0.10** thick
- Arranged in **layers**
- Around **90 day** lifespan
- **3** growth phases
- Varied **direction** of growth
- Varied **curls / lift**
- Varied **neatness**
- Varied **condition** (health)



Layers

- Lashes are randomly spread out along the 2-3mm section of lid margin.
- As few as 2 or as many as 5 - 6 layers.
- Some tightly packed or spread out.
- Easy = 3 layers: Top, Middle and Bottom.

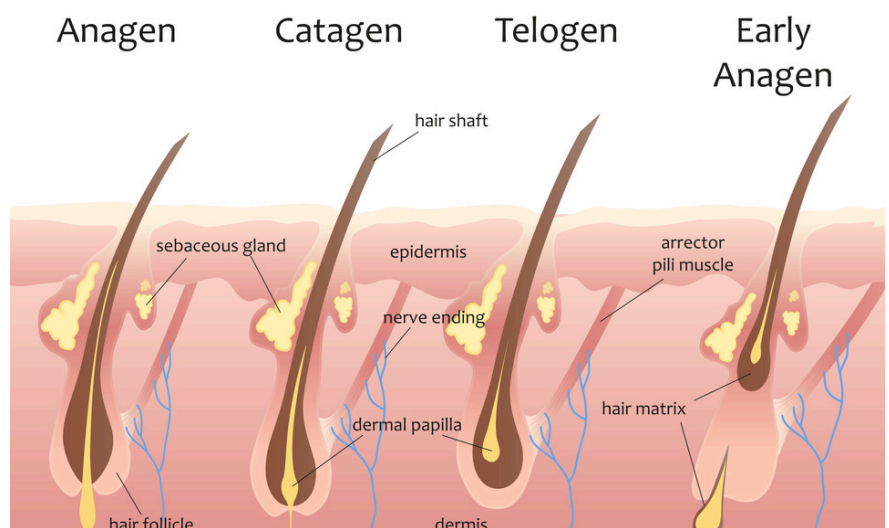


Growth phases

A Anagen

C Catagen

T Telogen



Anagen

Babies
Weak, short and fine
4 weeks

Do NOT treat

Catagen

Teenagers
Med - length
2-4 weeks

Treatable

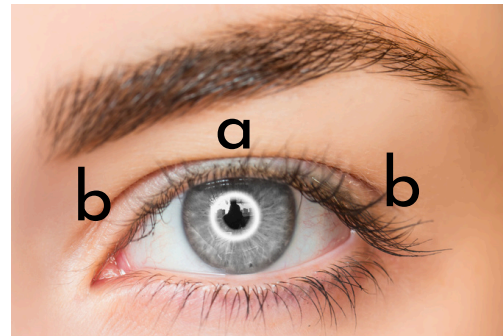
Telogen

Elders
Longest. Resting, waiting to shed
4-6 weeks

Treatable

Direction of growth

- Angle, growth direction varies
 - > May be lifted (**a**)
 - > May be downward facing (**b**)
 - > May be both or something in-between



Sizing the natural lashes

With experience, you'll gauge the length and thickness of natural lashes by sight, or:

- Find mid-length lashes (catagen) where the longest natural lashes are along lash line. Base the longest lengths you can use on these (+30-50%)
- Hold 1 extension of similar length + curl in tweezers. Hold near the lash to compare
- Extensions are 0.5mm-1mm away from eyelid. A 10mm extension = 10.5mm-11mm

Quick Quiz. True or False

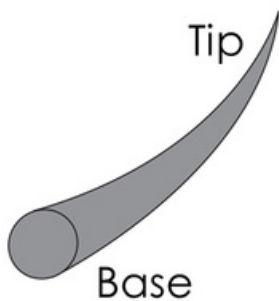
- | | | |
|----------|---|----------------------|
| 1 | The more lashes a person has, the more extensions you need to apply | <i>True or False</i> |
| 2 | Lash extensions should be longer than the natural lashes | <i>True or False</i> |
| 3 | Lashes at the inner and outer corners tend to be weaker | <i>True or False</i> |
| 4 | There's usually more lashes in the middle of the eyelid | <i>True or False</i> |
| 5 | All the lashes along the eyelid will have the same strength | <i>True or False</i> |
| 6 | The infant growth phase is called Telogen | <i>True or False</i> |
| 7 | Infant lashes can be treated to create a fuller look | <i>True or False</i> |
| 8 | The direction of growth, determines the curl of the extensions to be used | <i>True or False</i> |

Lash extensions

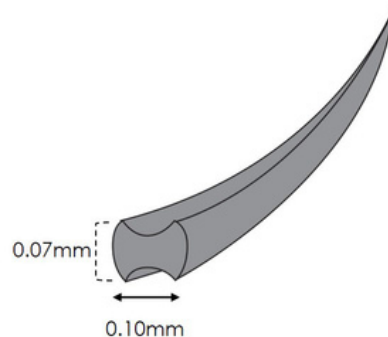
- Synthetic fibers. Polybutylene Terephthalate (PBT)
- Available in trays of lash strips / lines
- Handmade in factories in Asia
- Often called Mink or Silk, still PBT! Difference is thickness
- Thicker at the base, tapers (thins) towards tip
- Traditional shape = 'cone' shaped
- Flat lashes: less weight, fuller look, faker looking



Cone shaped



Flat



Volume Fan (4D)

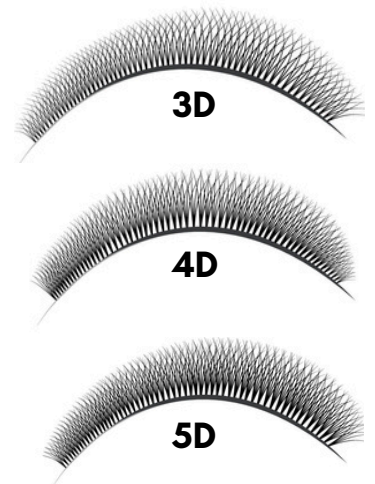


Classic lashes

1 lash extension bonded to 1 natural lash

Volume lashes

- 2 or more ultra-fine extensions bonded to 1 natural lash
- Placed in a V formation / shaped like a Fan
- Creates density / darkness more safely (less weight)
- 4 extensions in a fan = called 4D (D means 'dimension')
- Generally, the more D, the darker the look (as shown)



- *Handmade Volume*: Multiple lashes made into a Fan shape by skilled lash artists
- *Readymade Volume*: May be called Premades or Promades = fans made by manufacturer that are ready to use

Hybrid lashes

- A mix of Classic (individual) and Volume 'fans' used together in the same set
- Not 50:50 = limits creativity

Lengths

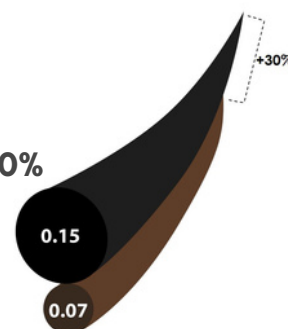
- Available from 4mm to 25mm
- Use **4-6 different lengths** in each lash set = shape and protects weaker lashes

Extension = same thickness as the **natural lash**: Extend by up to **50%**

8mm natural lash, up to 12mm extension

Extension = twice the thickness of the **natural lash**: Extend by up to **30%**

8mm natural lash, up to 10/11mm extension



Determining Lengths

Pick up an extension that looks similar to the length and curl of the natural lash in your tweezers and hold close to the lash line to compare

Curls

Growing range of curls, each with a letter code



Soft curls



Curlier curls

- Soft curls: elongate horizontally
- Curlier curls: lift vertically



Thicknesses

- Growing range of thicknesses
- For Classics: 0.10mm to 0.15mm ranges recommended = prevent overloading

Thickness in mm	0.03	0.05	0.07	0.10	0.12	0.15	0.18	0.20	0.23	0.25	0.30
	Ultra-fine			Fine		Thick	Extreme		Far too heavy!		
Purpose	Dark and light Volume			Light Volume & 1:1		1:1	1:1 with care		Not recommended		



Mix lengths (advanced)

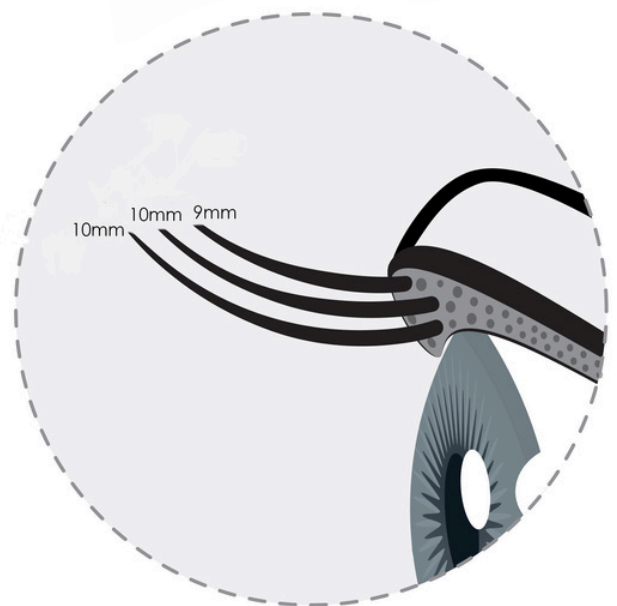
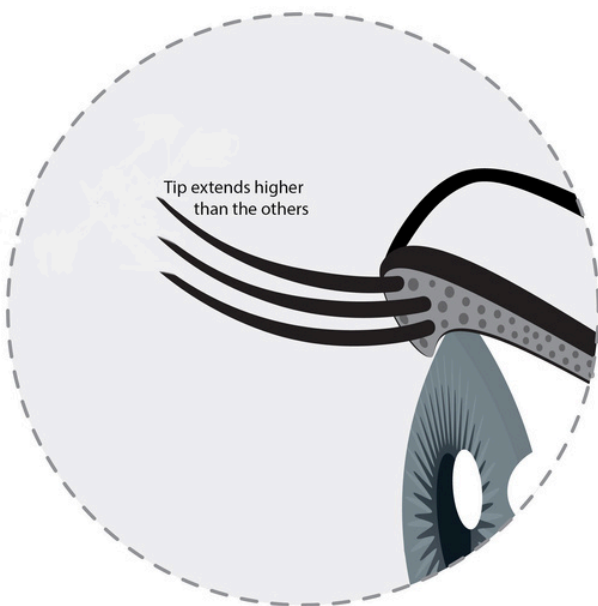
Feathering lengths

- Blend shorter lengths = darker and fluffy lashes
- Lash map: shows some 9mm extensions placed in the 10mm section. Place randomly in the layers = blending



Neat work. . .

- Lash map: shows what goes where, for example, use 10mm in the 10 section
- Use 1mm short lashes on top layer = neater finish / no sticking up lashes



Mix lengths and curls (advanced)

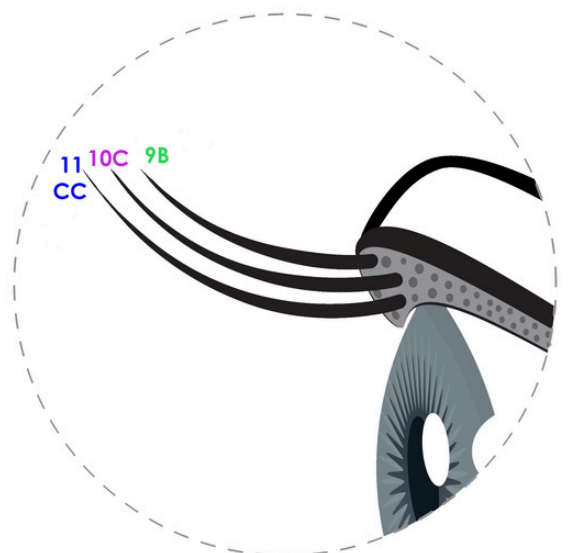
- For precise neatness (smooth lash shape), mix the lengths and curls in layers
- Chose length and curl on bottom layer
 - > Middle layer = 1mm shorter + less curly
 - > Repeat for the top layer

Example

Bottom layer 11CC

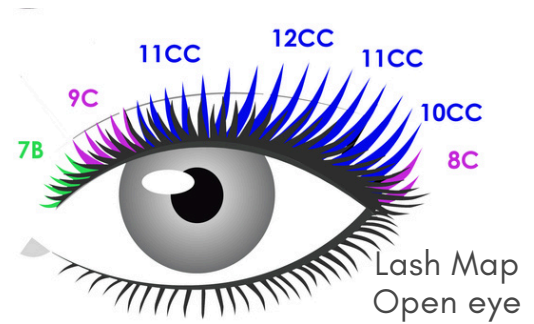
Middle layer 10C

Top layer 9B



Mix curls along the lash line

- Mixing curls along the lash line = advanced styling. Disguises hooded eyes, balances uneven features. . .
- Skip a length when changing curls because of the similarities (7B similar to an 8C so use 9C)



Brown lashes

- Black extensions can look harsh on natural blond / red heads and mature people
- Brown lashes = softer framing
- Can blend with black ones for more darkness
- Range of brown shades available



Quick Quiz. True or False

- | | | |
|----|---|---------------|
| 1 | Lashes are made of PBT. These are called mink that are real mink hair | True or False |
| 2 | You can extend all lashes by 50% of their length | True or False |
| 3 | D curl is a soft curl | True or False |
| 4 | Hybrid lashes are Classic lashes and handmade volume | True or False |
| 5 | The term D for volume fans means 'diameter' | True or False |
| 6 | 0.07mm lashes can be used for Classics | True or False |
| 7 | The longer the extensions, the more sparse the look | True or False |
| 8 | To create neat lashes, use 1mm shorter lashes on the top lash layer | True or False |
| 9 | When changing from a 8B to a C curl, you would use a 9C | True or False |
| 10 | You can mix different shades of brown lashes | True or False |
| 11 | You can mix different thicknesses together | True or False |

Consultations

Hold professional consultations in private. Treat in the strictest confidence.

Suitability

- Check for contra-indications
- Record them on paper or digital Suitability form / Service Record
- If in doubt, do not treat, e.g. reacted to treatment before

Consent

- Describe how it's done
- Describe risks and purpose of patch test
- Advise what a reaction (contra-action) may be, and what to do
- Obtain their signed consent to treat

Look

- What look do they want?
- Assess the lashes
- Assess feasibility, e.g. suits them & not over-loading natural lashes
- Agree what you can do and why

Patch Test

- Test 24-48 hours before treating using **all** products
- Advise to tell you if they have any reaction
- If they react, offer removal. If severe, see a doctor
- Write your advice / actions on Clients Service Record

Explain

- No contra-actions = can treat
- Agree the treatment time/date and duration
- How to pay (Optional: take a non-refundable booking fee)
- How to prepare for appointment
- Must care for their treatment
- Cancellation and missed appointment policies
- Any questions?

Suitability = contra-indications

- Check for **contra-indications**. Conditions that may pose a risk to you or your client
- If you suspect a condition, e.g. see blepharitis like symptoms, describe what you see (inflammation) and that it's why you can't treat them now. Recommend they seek professional advice. Can only treat when it's resolved
- **Golden rule:** If in doubt, don't treat
- We're **NOT** qualified to diagnose / recommend treatments

Suitability for Lash Extension Treatments

Conditions that may require permission to treat from a medical practitioner

	No	Yes - Notes
Have you had chemotherapy in the last 6 months?	✓	✗
Have you had vision correction surgery in the last 6 months?	✓	✗
Have you had surgery near your eyes in the last 12 months?	✓	✗

Conditions that may restrict the ability to treat

	No	Yes - Notes
Have you had a lash extension treatment before?	✓	Any issues? ✗
Are you allergic to glues, tapes or plasters or have any other allergies that you are aware of?	✓	✗
Are you pregnant or is there a chance that you might be?	✓	?
Do you have or have you had any of these in the last 4 weeks:		
Conjunctivitis ✗	Cysts ✗	Styes ✗
Blepharitis ✗	Itchiness ✗	Folliculitis ✗
Do you have, suffer or experience:		
Respiratory issues (e.g. Asthma) ?	Cataracts ✗	Glaucoma ✗
Dry Eye Syndrome ✗	Alopecia or Madarosis ?	Blepharoplasty ✗
Claustrophobia ?	Watery Eyes ?	Trichotillomania ?
		Hay Fever ?
		Light Sensitivity ?
		Hypersensitive Skin ?
Do you have near or around your eyes:		
Eczema or Psoriasis ?	Cuts or Abrasions ?	Inflammation or Swelling ✗
		Any Discomfort ?

Factors that may affect the treatment

	No	Yes - Notes
Do you have oily skin or hair?		✓
Are you taking any medications, prescription or otherwise? Notably, Contraceptives, Hormone Replacements or Thyroid medication		?
Have you had your lashes permed/lifted in the last 3 months?		?
Do you use eyelash curlers?		✓
Do you use a lash serum or eye drops?		✓
Do you wear contact lenses or glasses?		✓
You will be laying in a reclined position for some time. Will this be a problem? For example, aggravate a pre-existing condition.		If yes, state below the Condition, Risk and Plan agreed to remove or reduce that risk. For example: Whiplash. Risk of discomfort e.g. take breaks. ?

✗ Don't treat

? May be able to treat

✓ Okay to treat

Consent

Informed consent = need to know what to expect. . .



1. Explain HOW the treatment is done

You'll be laying on my couch for [time].
I'll protect lower lashes with tape and you can close your eyes and relax.
I isolate one lash with tweezers. With another pair, I pick up an extension.
I dip it in glue and bond it to your lash.
This is repeated many times to create your look.
I'll ask you to open your eyes when I've finished.

2. Explain the RISK of a reaction (contra-action)

I need to patch test you with my products.
This is to check if you'll be okay with them at this time.
I need to do this, even if you've been treated before.
A reaction is rare. If it happens, it may be redness or itchiness around your eyes.
In more severe cases, puffiness, swelling or pain in or around your eyes.

3. Explain WHAT to do if a reaction occurs

If this happens, or if you have any concerns, please call me.
If you're really concerned, see a medical practitioner and let me know as soon as possible. This will be at your own expense.
I can remove the lashes if a doctor recommends it or if or when you're not in discomfort.

ALERT, not ALARM

Contra-actions

Reaction experienced **during** or **after** treatment. Symptoms include:

During

- Watery eyes
- Runny/congested nose
- Burning nasal passages
- Sore throat
- Jaw tenderness
- Headaches
- Asthma attack

After

- Sclera red, blood shot
- Itchy eyelids
- Dry eyes
- Red eyelids, may feel hot/burning
- Puffiness or swelling of eyelid or upper cheeks
- Asthma attack (rare)
- Aching jaw/teeth (rare)

Some symptoms are similar to hay fever or cold/flu.

Symptoms may persist for 1-3 days (average), or as long as 7 days.

May persist for 1-2 days.



Duty of care

- **No discomfort or visible symptoms:** Remove with debonder. Wash thoroughly
- **Discomfort, visible symptoms or concerned:** Consult a Doctor and update you

Treatment Records (more soon)

Record exactly what they reported. Describe what you see. Your advice and actions. Ideally, see them in person and take / keep photos.

Reducing Risk

- Ventilate area well
- Source Capture Ventilation unit

You're exposed - use / wear personal protective equipment (PPE)

- Masks
- Ventilation unit

Consent for Lash Extension Treatments



Please read the following and ask for clarification if needed. You will be asked to sign this form to provide your consent to be treated, having agreed or acknowledged the following:

My Lash Stylist may apply lash extensions to my natural eyelashes or remove them as necessary. I understand that I may need to have a Patch Test done at least 24-48 hours before a full treatment is possible. This is where 2-5 extensions are applied to my natural lashes in the way the treatment is usually done, using all the products used to treat. The length, thickness and curls used will be determined by my Lash Stylist to ensure that the health of my natural lashes are always cared for.

I confirm that they have explained that:

- I understand that despite a successful Patch Test, there are occasions, though rare, when someone could experience a reaction to a treatment whether it's their first time or after many. If this happens, I will advise my Lash Stylist who will offer to remove them if it is safe to do so following assessment of the treatment area.
- I understand that a reaction could include irritation, redness, itching, puffiness or swelling in or around one or both of the eye areas that may cause discomfort. I may consult a Medical Practitioner at my own expense.
- In the interests of safety and to get the best results from my treatment, I will:
 - Remove any eye makeup for every appointment and arrive with clean lashes.
 - Remove my contact lenses for every appointment (if worn).
 - Keep my eyes closed during treatment until invited to open them.
 - Lay still for the duration of the treatment and keep talking to a minimum to facilitate this.
 - Follow the care advice given and keep the aftercare advice leaflet for reference. If I do not follow this care advice, I understand that it may affect how long my treatment lasts and how it looks.
 - Tell my Lash Stylist if my medical circumstances change as they may affect future treatments.

I agree to respect my Lash Stylists cancellation policy in recognition of their loss of earnings. I will give as much notice as possible should I need to reschedule my appointment. I may be asked to pay a cancellation fee in certain circumstances that may need to be settled before another appointment is offered.

Important Notice: Infection Prevention Policy following the Coronavirus (COVID-19) pandemic

Personal safety is our priority. This policy has been implemented in line with our risk assessment. It takes current government advice into account and that from professional bodies. **Thank you for helping us to work safely.**

Before your planned appointment	If you, anyone you live with or anyone you have come into contact with has any Coronavirus symptoms (diagnosed or not), please tell us as soon as you can. This includes unrelated symptoms where you are not feeling well. Your appointment will be cancelled. We are happy to reschedule it for when you are feeling better or following the recommended period of self-isolation in line with current guidelines.
Attending your appointment	Please arrive for your appointment at the agreed time only. This will ensure the safe passage of people and protect the time needed to perform the necessary sanitation procedures between clients. You will be invited to wash your hands in line with NHS guidance. Please only bring what you need and do not bring guests along. For certain treatments, you may need to wear personal protective equipment like a facemask. We welcome contactless payments wherever possible.
After your treatment	In line with current Government guidelines, please contact us immediately if you or someone you have been in contact with experience Coronavirus symptoms. We can then take steps to prevent a further risk of infection to others.

GDPR Data Privacy Notice

We take your right to privacy seriously. We need your contact details so we can manage appointments. We need certain medical/health details to ensure that it's safe to treat you. Details are recorded on this Form that's stored securely. We will not pass your information on and it will not be used for marketing purposes.	You have the right 'to be forgotten'. Insurance provisions require us to retain relevant records for up to 7 years. If you wish 'to be forgotten', we cannot offer/continue treating.	You have the right to see the data we hold about you. To help us, please do so in writing and we will act ASAP. You may ask for corrections if needs be.	In the unlikely event of a data breach (records lost/stolen), we will advise the Information Commissioners Office (ICO) ASAP and those affected. You have a right to notify the ICO if you are concerned about our handling of your data. We welcome the chance to allay any concerns directly.
--	--	---	--

I am over the age of 18 years	<input type="checkbox"/>	I have read and agree with these Terms & Conditions of service	<input type="checkbox"/>
I have read/understood the Privacy Notice	<input type="checkbox"/>	You may collect/process my data as it's needed to contact/treat me	<input type="checkbox"/>
You may take photos for marketing purposes	<input type="checkbox"/>	The information I've provided is true to the best of my knowledge	<input type="checkbox"/>

Signed	Print Name in Full
Lash Stylist Signed	Date 20 DD WW YYYY

Look

What do they want?

*What can they have?
(safe & suits them)*

- **Assess** natural lashes when **patch testing**
- **Agree** what you **can do** and **why** (safe and suits)
- If what **they want will overload** lashes or **not suit** them = **DO NOT TREAT!**

Tips. . .

Ensure you know what they want

Your idea of natural may be different to theirs!

Beware of 'I want them this this'

Like asking a hairdresser to create a models style on someone with different features

Use 'plain English'

Avoid 'lash jargon' like 'Squirrel'. Use understandable terms like **natural**, **noticeable** or **glamorous**

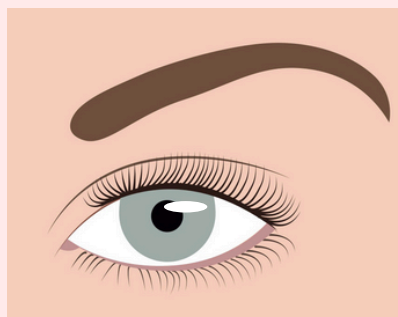
How many extensions to apply

Depends on their natural lashes and the look you're creating. . .

Natural



- ☐ 50-80 lashes to darken
- ☐ Extend up to 1-2mm
- ☐ 0.12mm thick
- ☐ Could mirror natural curl



Noticeable



- ☐ 70-100 lashes for effect
- ☐ Extend up to 2-3mm
- ☐ 0.12 - 0.15mm thick
- ☐ C curls work well



Glamorous



- ☐ 100+ lashes for wow
- ☐ Extend up to 50% if strong
- ☐ 0.15mm thick or 0.20 Flats
- ☐ CC curls work well



Patch test

Patch Test every

- New client
- Client after a change in their health
- Client who hasn't been treated within 6 months
- Time you change a product (glue, cleanser, tape, pads, etc). Can be done during a routine treatment. Inform them first. Record it on their Service Record
- Most insurers require it. Failure to do so = invalidated insurance
- Most glue suppliers require it. Failure to do so = invalidated insurance
- Test ALL of the products used to apply AND remove (not just the glue!)
- Better to spend 20 minutes doing a professional consultation that includes a patch test so you know for sure that their 2-3 hour treatment time won't be wasted!

What's a Patch Test?

A **mini-treatment**. Apply 5 short/fine extensions to the outer corners on both eyes.

It is not a skin test. This is a very outdated and dangerous practice.

Explain

Prepare for their appointment

- Read and agree your Terms and Conditions of service! Includes:
 - > Booking fee
 - > Late notice cancellations and missed appointments
 - > Preparing for their treatment
 - > Caring for it
- Stop using eyelash curlers. They crimp the lashes
- Wear comfortable clothing. No scarves / hooded tops = awkward when laying down
- Avoid drinking lots of caffeine or alcohol = makes eyes flicker, need for toilet breaks
- Arrive on time. Lateness reduces treatment time
- Come with clean lashes. Deep cleaning reduces treatment time
- Remove contact lenses = safety and comfort
- Set their phone to silent = relax
- Leave children and pets at home = relax so we can work!
- Use toilet just before = comfortable & reduces breaks that reduce treatment time

Service Records

Must keep **accurate** and **relevant** records (information) about each clients treatments:

- Consultation and patch test
- Treatments (what you used and how you used it (e.g. lash map) so it's repeatable
- Contacts where issues raised (poor retention, health issue, contra-actions)

Update Records after each treatment or interaction = information is fresh

Example Service Record, partially completed to demonstrate what you need to record.

Client Service Record for Lash Extension Treatments



Name		Date of Birth	
Address			
Phone		Email	
What do they want from their Treatment?			
Very Natural	<input type="checkbox"/>	Natural	<input type="checkbox"/>
More Length	<input type="checkbox"/>	More Volume	<input type="checkbox"/>
Noticeable	<input type="checkbox"/>	More Lift/Curl	<input type="checkbox"/>
Glamorous	<input type="checkbox"/>	More Darkness	<input type="checkbox"/>
Eye Shape			
Almond	<input type="checkbox"/>	Round/Wide	<input type="checkbox"/>
Narrow	<input type="checkbox"/>	Symmetrical	<input type="checkbox"/>
Eye Setting			
Close Set	<input type="checkbox"/>	Even Set	<input type="checkbox"/>
Wide Set	<input type="checkbox"/>	Deep Set	<input type="checkbox"/>
Protruding	<input type="checkbox"/>	Upturned	<input type="checkbox"/>
Downturned	<input type="checkbox"/>		
Eyelids			
Monolid	<input type="checkbox"/>	Single Crease	<input type="checkbox"/>
Double Crease	<input type="checkbox"/>	Hooded (All)	<input type="checkbox"/>
Hooded (Middle)	<input type="checkbox"/>	Hooded (Outers)	<input type="checkbox"/>
Symmetrical	<input type="checkbox"/>		
Brows			
High	<input type="checkbox"/>	Low	<input type="checkbox"/>
Straight	<input type="checkbox"/>	Soft Arch	<input type="checkbox"/>
Angled	<input type="checkbox"/>	Styled to Suit	<input type="checkbox"/>
Symmetrical	<input type="checkbox"/>		
Natural Lash Condition			
Coarse	<input type="checkbox"/>	Thick	<input type="checkbox"/>
Fine	<input type="checkbox"/>	Fragile	<input type="checkbox"/>
Straight	<input type="checkbox"/>	Slight Curl	<input type="checkbox"/>
Curly	<input type="checkbox"/>		
Natural Lash Characteristics			
Sparse	<input type="checkbox"/>	Full	<input type="checkbox"/>
Gaps	<input type="checkbox"/>	Crossovers	<input type="checkbox"/>
Frazzled	<input type="checkbox"/>	Upturned	<input type="checkbox"/>
Downturned	<input type="checkbox"/>		
Lash Layers			
Few	<input type="checkbox"/>	Many	<input type="checkbox"/>
Compact	<input type="checkbox"/>	Spaced Apart	<input type="checkbox"/>



Lash Map 1	
Curls	
Thicknesses	
Lengths (if not on map)	
Colour(s)	
Lash Map 2 Changed your Map? Describe here	
Curls	
Thicknesses	
Lengths (if not on map)	
Colour(s)	

following your practice on
during your training session

Add an entry following your practice on your model during your training session




20

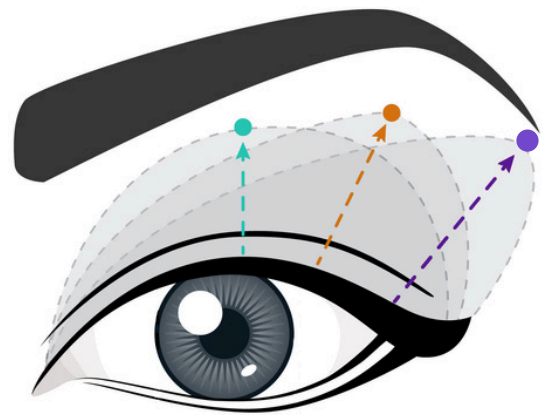
Quick Quiz

- | | | |
|-----------|--|--|
| 1 | Contraindication is. . . | a. Reason why we may not treat
b. Condition that may pose a risk
c. An infection
d. All of the above |
| <hr/> | | |
| 2 | Pregnancy is a contraindication | <i>True or False</i> |
| <hr/> | | |
| 3 | Which is the best option if you don't know if you can treat? | a. Ask for a doctors note
b. Contact your trainer
c. Refuse treatment
d. Contact your insurer |
| <hr/> | | |
| 4 | You can treat without a patch test if your client signs a waiver? | <i>True or False</i> |
| <hr/> | | |
| 5 | You should Patch Test again after any changes in their health | <i>True or False</i> |
| <hr/> | | |
| 6 | We can treat anyone who has had a Patch Test in the last month | <i>True or False</i> |
| <hr/> | | |
| 7 | You can keep paper or digital treatment records | <i>True or False</i> |
| <hr/> | | |
| 8 | You should remove the lashes immediately if they have a reaction | <i>True or False</i> |
| <hr/> | | |
| 9 | A contra-action is a reaction that happens after someone has been treated | <i>True or False</i> |
| <hr/> | | |
| 10 | You can treat someone who has had red and itchy eyelids following a treatment elsewhere as it was 2 years ago and you use different products | <i>True or False</i> |
| <hr/> | | |
| 11 | 2 days after being treated, a client reports that they have swelling along their eyelids and upper cheeks. What do you do? | a. Recommend cold flannels and antihistamines
b. Recommend that they see a medical practitioner
c. Remove their lashes ASAP
d. Offer a refund |
-

Lash Styles

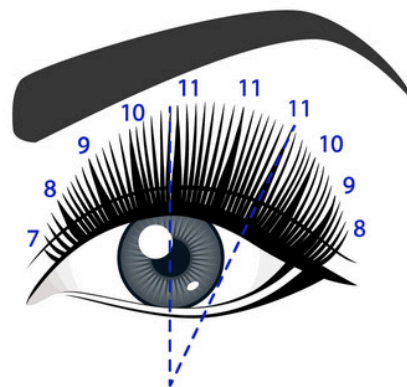
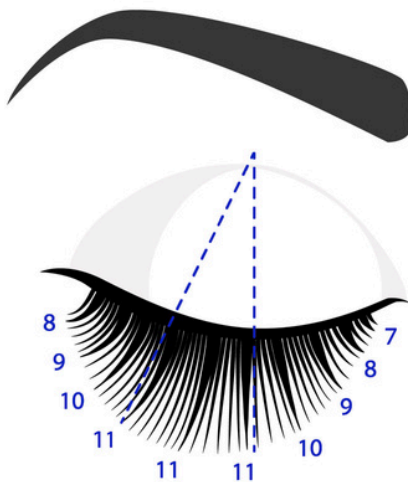
Common lash styles:

-  **Doll Round** Longest lengths placed around the widest vertical part or over the pupil
-  **Squirrel** Longest lengths placed half way between the middle and outer corner
-  **Cat** Longest lengths placed towards the outer corner



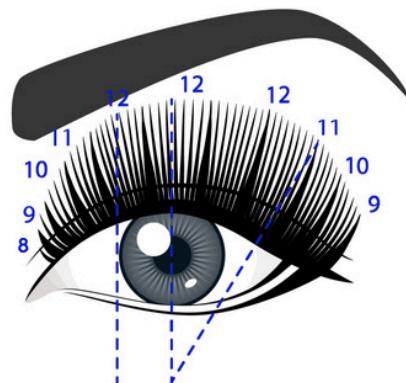
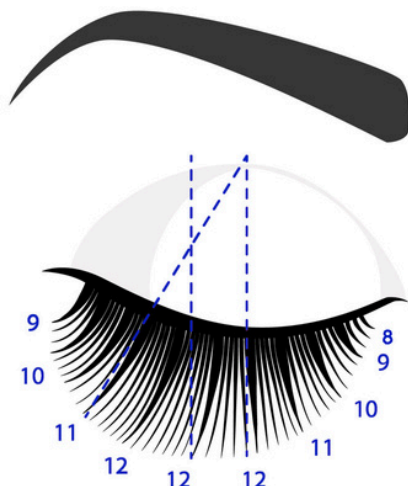
Round Style

Makes eye look more open, especially when curlier curls used



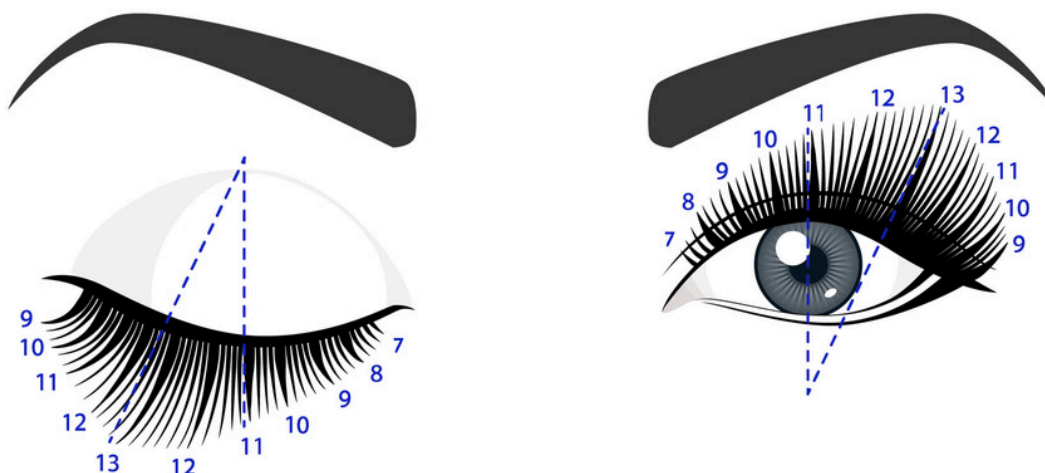
Doll Style

Glamorous look due to its dramatic shape



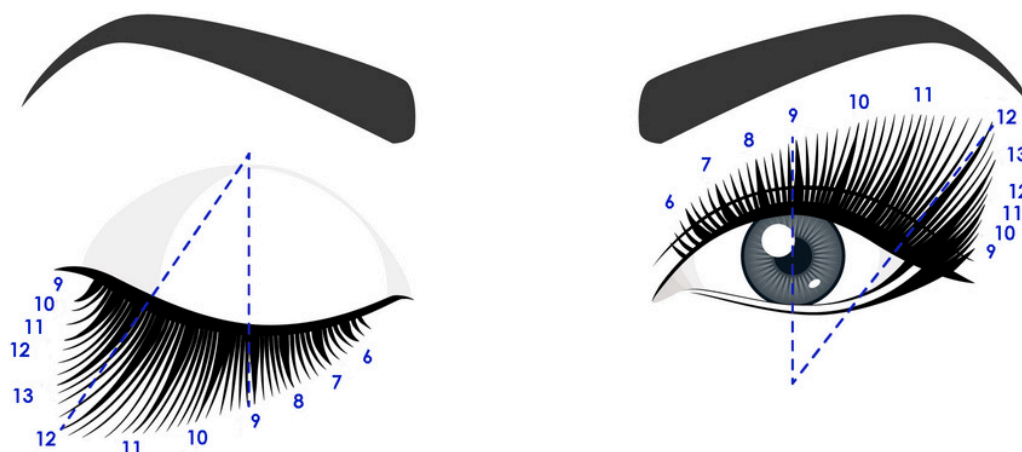
Squirrel Style

Suits most people



Cat Style

Elongates the eye. In demand but suits so few people!



Which one for each one?
Read on!

Lash Styling Considerations

- Artists design bespoke styles to suit each client
- Consider where the longest lengths need to be
- Consider how many different lengths are needed (4-7)
- Curls determined by the angle of lash growth and level of lift needed
- Thickness determined by darkness needed and how many natural lashes are treatable
- Advanced styling considers a wide range of features to determine the look and style
- It's easier to do this from a photo

Beginner lash artists start with the eye shapes, eye settings and eyelids

Almond



Narrow



Round



Protruding (Bulging)



Deep Set



Upturned



Downturned



Close Set



Wide Set



Hooded



Monolid



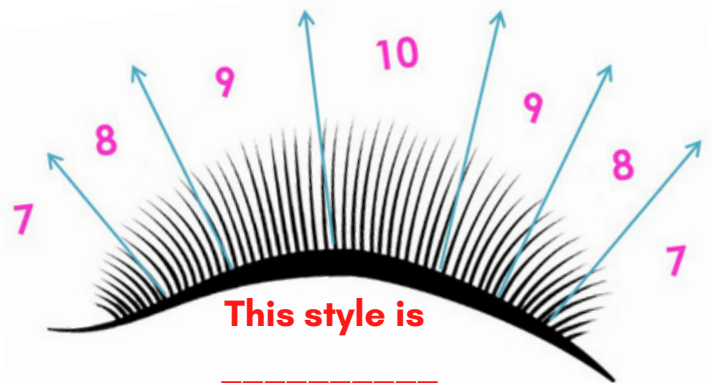
Lash Styling Cheat Sheet

Feature	Considerations	Good style	Bad style	Good Curl
Almond	A versatile eye to style	Any	-	Any
Narrow	Need to lift the eye open Use medium lengths in curly curls Elongating will look narrower	Round Doll	Squirrel Cat	C CC D
Round / Wide	Need to elongate to narrow eye Keep lengths short and curls soft	Cat Squirrel	Round Doll	Soft B C
Protruding	Need to elongate Keep lengths short and curls soft	Squirrel Cat	Round Doll	Soft B C
Deep set	Need to draw eye from socket Need length. Stronger curls need to be longer. Try them on!	Any	-	Soft C CC
Upturned	Take care with long extensions at the very outer corner as may over lift*	Round Squirrel Doll	Cat *	Any
Downturned	Need to lift where it droops Use short and curly lashes on the downturned section	Round Squirrel Doll	Cat	Curly CC D
Close set	Elongate to draw eyes apart Place Squirrel looks high point closer to the outer corner*	Squirrel* Cat	Round Doll	Soft B C
Wide set	Draw eyes closer together Place Squirrel looks high point closer to the mid-section	Round Squirrel* Doll	Cat	Curly C CC D
Hooded / Mono	Lift lashes out from the hood Style depends on whether: <ul style="list-style-type: none"> ▪ Hood covers whole lid line, or mid-section then (a) ▪ Hooded outer area (b) Longer, curlier curls needed to lift lashes from under the hood	(a) Round Doll (b) Squirrel	Cat	Curly C CC

Lash Mapping

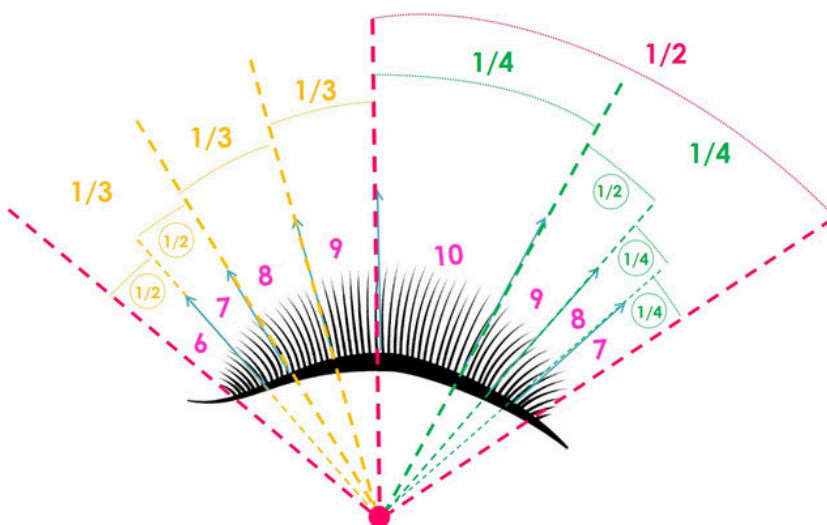
Mapping helps you to work:

- **Precisely:** Design has been thought out and mapped
- **Quickly:** Don't need to think about what you need to use!
- Guides where to place lash lengths (and the curls if you mix them)
- Use fine, soft tip pen to draw map on pads or tape = accurate and limits pressure
- Start lines from lid line = clear where the lengths change
- Draw lines in direction you want extensions: 90° (degrees) from lash line. Helps guide the direction / angle you place your extensions (shown). Add arrow heads!
- Write lengths between lines = clear
- Use sequential numbers = stops steps
- **Map where longest lengths will be. Then work down.** If longest are 10mm, consider where the other 3+ lengths will start and end (in line with the style being created)



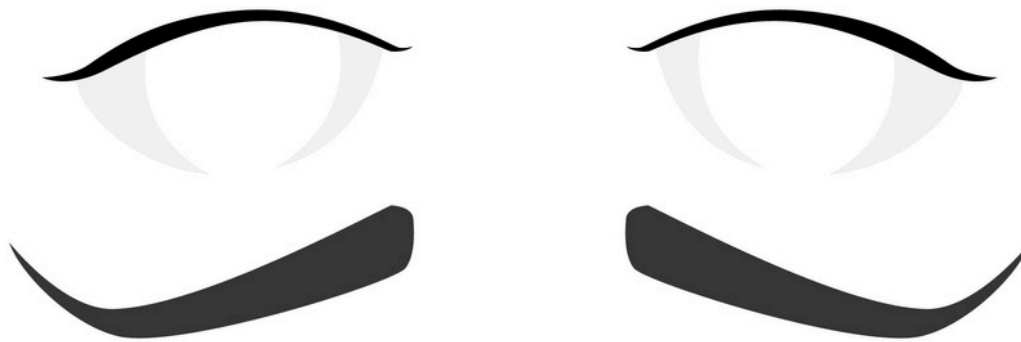
Beginner: easy mirror mapping on both eyes

Divide eye into sections: half, then quarters or thirds. Split evenly again (if needed)

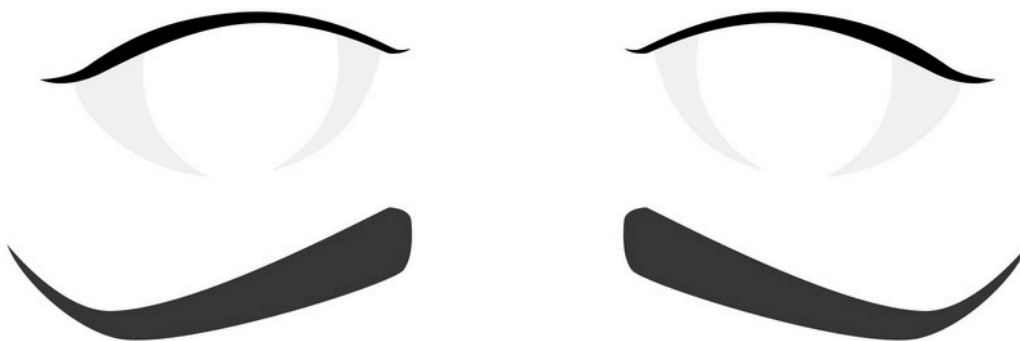


Practice mapping

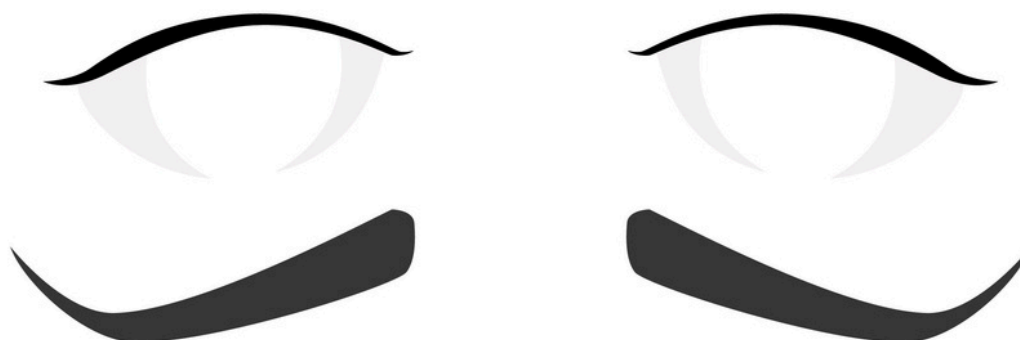
Create a Squirrel lash map. Ensure that it's mirrored on both eyes (same positions).
Make your lines as arrows so think about the direction the extensions need to go



Create a lash map for someone with close set eyes



Create a lash map for someone with wide set eyes and make them look elongated



Adhesive

1

Contains:

- Cyanoacrylate
- Carbon black (black glue)
- Stabilisers

Vary in:

- **Strength**
- **Cure speed** (0.5s to 5s)
- **Viscosity** (thickness)
- **Shelf life**
- **Environmental conditions** (temperature & humidity)

Colours:

- Black
- Clear

Bottle size:

2ml, 3ml, 5ml, 10ml

2

Sensitivity

- Stabilisers = main allergy causing ingredient
- Cyanoacrylate vapours can irritate membranes of the eyes, nose & throat
- You / clients may suffer Contra-action **during** or **after** treatment

3

What's the best glue?

- There isn't one best glue. One glue type does not suit everyone!
- Need the best glue for **your** skill level and **your** environment

Tip: Best to have a slightly slower curing glue.

- Can speed up slow curing glue.
- Can't slow down fast curing glue!

Glue often blamed for poor retention – more likely to be the **wrong glue** for their skill or environment.

Check the temperature and humidity levels using a hygrometer where you work. Then look for a glue that performs well in those conditions.

Environment = Temperature and Humidity

Temperature and humidity affect how the glue behaves.

Most work best. . .

Temperature: 18-22 degrees Celsius

Humidity: 40-60%

Cyanoacrylate polymerises rapidly by a chemical reaction with water.

It cures (not dries)

High humidity = Cures quickly

Low humidity = Cures slowly



Managing your environment

Low humidity

- Open window in damp weather
- Put bowl of water near glue drop
- Put wet cotton pads near glue holder
- Nebulise area briefly / occasionally
- Use less glue, allow more time to cure
- Use a glue formulated to cure quickly in low humidity

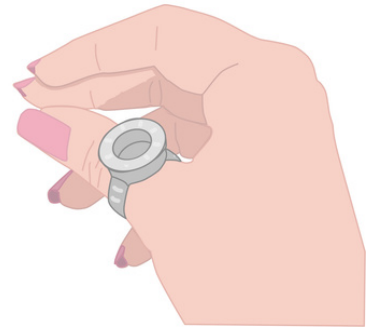
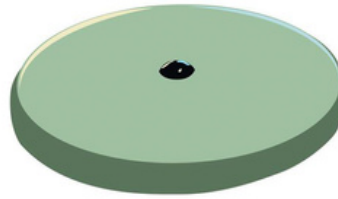
High humidity

- Use a de-humidifier
- Open window on dry/warm day
- Heat room in cold weather
- Avoid plants or flowers in area
- Use a little more glue
- Use slower curing glue

Glue holder

2 main types:

- Stone or flat based glue well
- Glue ring



Which?

Placing glue near lash pallet = quick 'pick and dip'

- Lash pallet at side of clients head = use glue stone or glue well on / near it
- Lash pallet on hand = glue ring (more risks as ring within breathing zone)

Cleaning or covering:

Stones

- Sticky back glue stone covers
- Micropore tape (overlap 2 strips)
- Tin foil

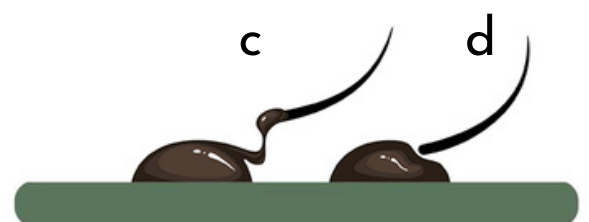
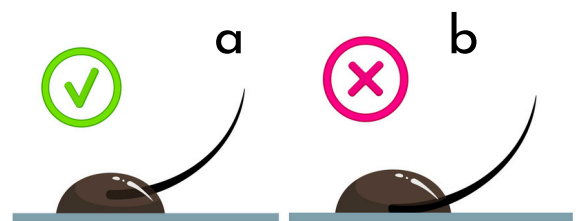
Rings and glue wells

- Tin foil

Jade stone: Place face up in cup. Cover with boiling water. Soak for 10+ minutes.

Using the glue

- Shake well
- Tilt at 45 degrees with neck 5mm from holder
- Squeeze gently to release 1-2 drops
- Wipe neck, replace lid quickly
- Dip in 'top of the blob' where fresh (a), not side (b)
- Dip slowly in and out. Too much? Re-dip, don't dab
- Dip a little quicker when hot & humid
- Use fresh = shiny and thin
- Old = matt, gloopy, stringy (c), forms a seal (d)
- Set new drop away from old ones
- Warm/humid = fresh drop needed more often



Glue care

- Use/store in line with manufacturers guide. Unless advised, don't store in fridge
- Check **lifespan**, both **opened** (1-2 months) and **unopened** (6-12 months)
- Write date opened on bottom of bottle
- Narrow neck limits exposure to moisture when opened. To help:
 - Open when you need it
 - Replace lid quickly and tightly, straight after use
 - Wipe bottle neck with nozzle wipe to prevent it sticking

Safety

- Cyanoacrylate has a rapid and powerful exothermic reaction in contact with **natural fibers** (cotton, wool and leather)
- **Exothermic reaction** is a chemical or physical reaction that releases heat
- Can cause burns or ignite the fibers. Emits smoke and the smell is very potent

Glue on skin

- Cyanoacrylate may sensitise the skin when it's in direct contact. May make it to feel like it's burning
- Patch tests should never be done by placing glue directly onto the skin. They should replicate the treatment process. If your insurer demands it, change them!
- Don't use cotton buds to wipe it = exothermic reaction
- Check the Safety Data Sheet for advice. Usually to wash area with soapy water

Safety Data Sheets (SDS)

- Chemical product details
- Company identification
- Identification of hazards
- First aid measures
- Advice on storage, handling, firefighting measures, considerations for its disposal, regulatory and ecological information.

Products include: Glue, debonder, cleanser, sealant, primer, eye pads and tape.

- Obtain a copy of each SDS.
- Good practice: make accessible on your website

Using eye pads and tapes

4 main uses:

1. Protect lower lashes during treatment. Apply with precision
 - > Too close to eye: Makes eyelid twitch or eyes water. Can graze the eye
 - > Too far away: Lashes from bottom eyelid get bonded to upper lid lashes (stickies)
 - Can move when client talks, laughs, coughs or sneezes
 - Avoid resting isolating hand on eyes, this moves them or opens the eye
2. Lift lashes from pads/tape
3. Stretch lid at corners for isolation
4. Work in lash layers for lift, isolation and precision

Eye pads

Pros

- Easier to remove than tape
- More gentle on delicate skin

Cons

- Easily dislodged
- One size doesn't fit all

Tape

Pros

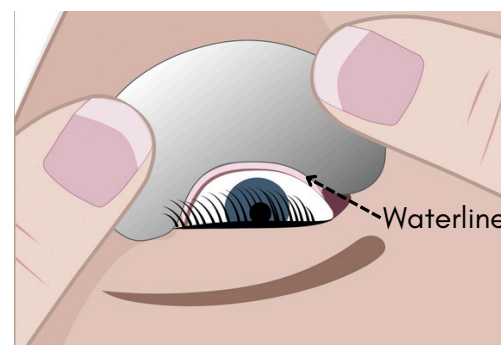
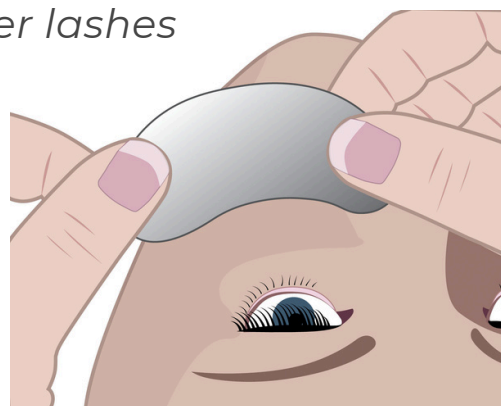
- Can make it fit every eye
- Stays in place

Cons

- Harsh on skin, unless de-tacked
- Can be uncomfortable to lift off delicate skin

1. Apply and remove *pads* to protect lower lashes

- Open just before use (they dry out)
- Peel off backing cover
- Hold sides at 45 degree angle to eye with inset curve nearest eye (shown)
- Tell them to look up to the ceiling
- Place 4th finger on their cheek and gently pull skin down = draws lashes downwards
- Place pad on skin, just under water line. Start at one corner, work it in place along lid
- Ask them to close eyes slowly
- When both applied, check comfort and coverage. Adjust if needs be
- Remove whilst eyes closed
- Lift at one end, peel away from the eye

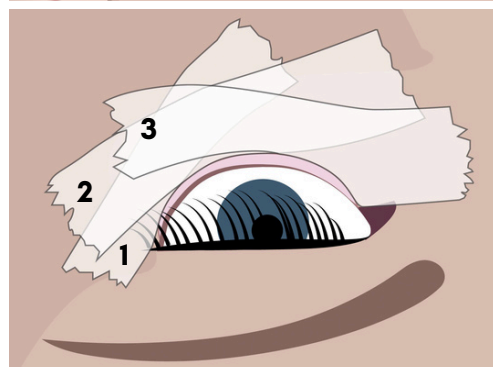
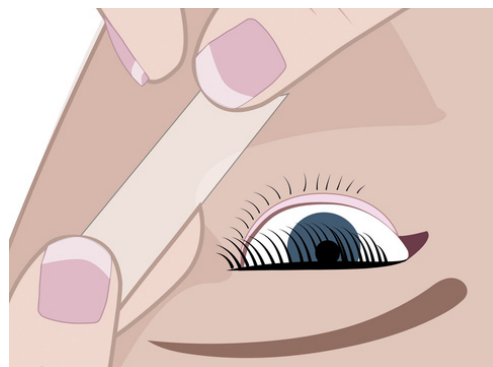


1. Apply and remove **tapes** to protect lower lashes

Tape types: Micropore, Microfoam, Durapore, Nichiban, Nexcare

Note: Don't use Transpore tape - edges are too sharp

- De-tack a 4-5cm piece of tape*
- Fold tape edge back on itself to create a tab = whole length isn't fixed to skin (easier to lift off)
- Hold sides at 45 degree angle to eye
- Tell them to look up to the ceiling
- Place 4th finger on their cheek and gently pull skin down = draws lashes downwards
- Place tape on skin, just under water line. Start at one corner, e.g. 1 at outer
- Place 2nd, covering lashes where the 1st ends
- Place 3rd piece further along. . .
- Ask them to close eyes slowly
- When both applied, check comfort and coverage. Adjust if needs be
- Remove whilst eyes closed, hold skin taut
- Lift 1 piece at a time, not all together as lashes sandwiched between layers. Start with top layer



Tips

- Use tape on deep set eyes due to depth
- Use narrow tapes strips on pronounced or rounded cheeks. Trim width by 25-50%
- Upper lashes pushed up if tape too close to waterline at outer corner (shown). Re-adjust
- Can use pads and tapes together. Place pad near lash line. Use tape to secure lashes = less tape on skin and lashes more secure

*De-tacking sticky tape

Over-sticky tape = hard to remove, causing discomfort. De-tack it.

Place tape strip on a sanitised surface. Rub down, lift off. Repeat 3-4 times



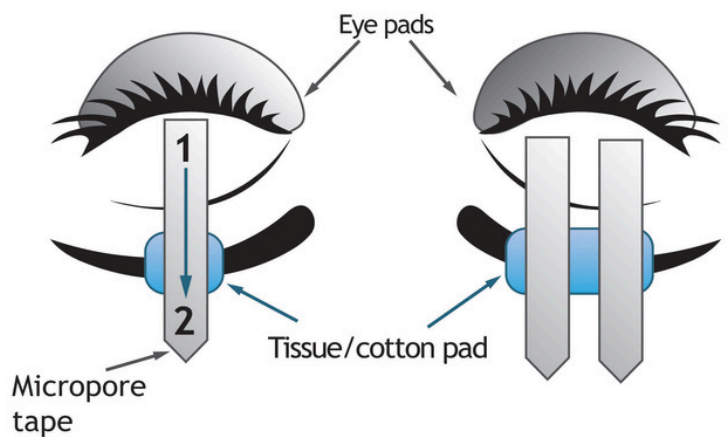
Never de-tack tape on your hand or client's skin = unsanitary

Lifts dead skin cells, oils, bacteria etc. . .

2. Lift lashes from the eye pads or tape

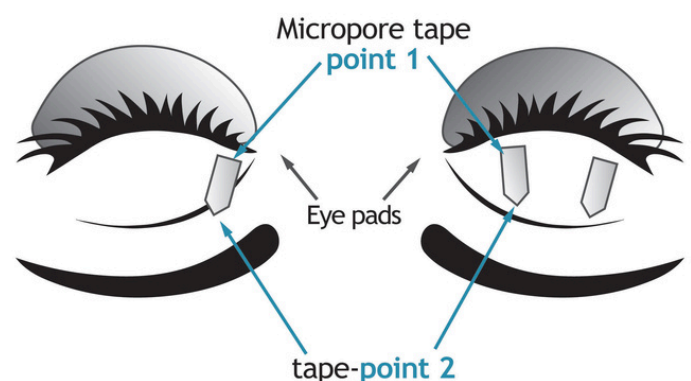
Down-turned lashes or heavy eyelids = lashes rest on eye pads/tapes. Difficult to treat as you'll glue extensions to them!

- De-tack 3cm piece of tape
- Fold one end back on itself to make tab (2)
- Place non-tabbed end (1) on eyelid, close to lashes
- Lift tape back, towards you to lift lashes so they're 90 degrees to their face. Ensure eyes remain closed
- Stick rest of the tape on eyelid (2)
- Hold the skin taut to remove to prevent comfort



Tips

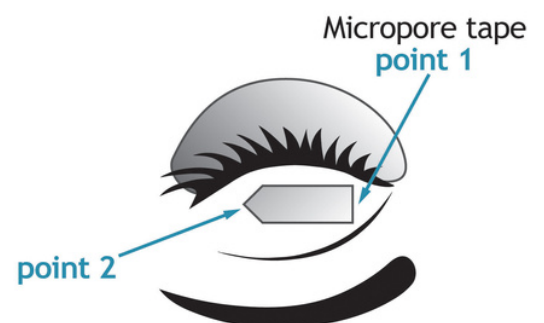
- Long lash line or heavy lids = use 2 pieces, spaced apart for fuller lift
- If tape extends over the brow, protect brow hairs with tissue
- If only a little lift needed = use 1-1.5cm long pieces, trim width by 50%
- Use dental mirror to check eyes are closed



3. Stretch lid at corners for easy isolation

This spreads inner or outer corner lashes out

- De-tack 2.5cm piece of tape
- Fold one end back on itself to make tab (2)
- Place non-tabbed end (1) on eyelid, close to the lashes at desired corner
- Gently draw tape towards the other corner. Stick down on eyelid (2)



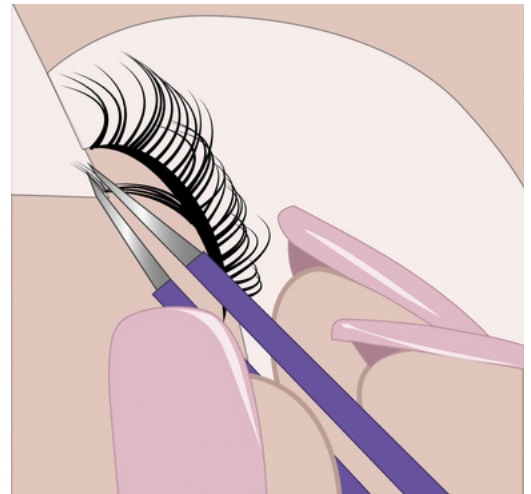
4. Work in lash layers for lift, isolation and precision

Time saving hack!

Can lift treated and untreated lashes without harming well placed extensions!

- Lifts lashes from eye pads or tapes
- Moves layer(s) away to help to isolation precisely
- See/reach lower layer better for better placement

- Comb lashes = neat as possible
- De-tack 3-4cm piece of tape. Tab at one end or use eye pad
- Hold sides. Sticky side up.
- Slide long edge under 40-50% of the lashes length. Lift up to touch lashes
- Lift lashes gently back on themselves, towards eyelid and stick down
- Ensure eye is closed and lashes not being 'pulled'



To remove tape, either. . .

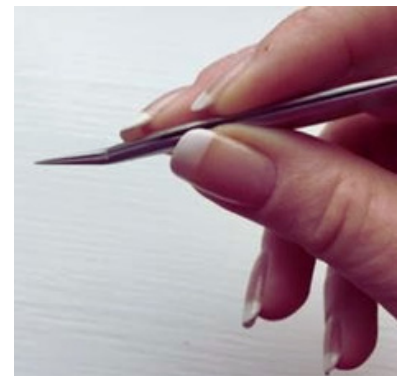
- Tweeze lashes from under the tape. Hold skin taut and lift tape off - or
- Start to lift at one end, gently tweeze lashes off as you reach them (shown)

Eye pads lift away easily

Tweezers

- Wide range: straight, curved or angled foot (tip), soft or firm, grooved. . . Find what works for **you**
- Correct use
 - > Comfort = stops strain, callouses, joint disfigurement
 - > Safety due to control

Rest **index** and **middle finger** on top of the tweezers, 1.5-2cms away from tips, thumb to the back (shown)



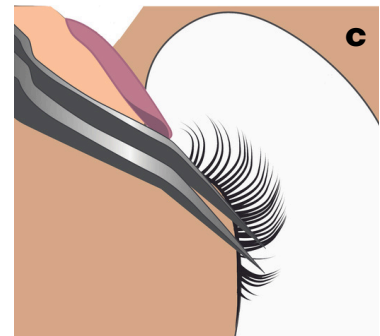
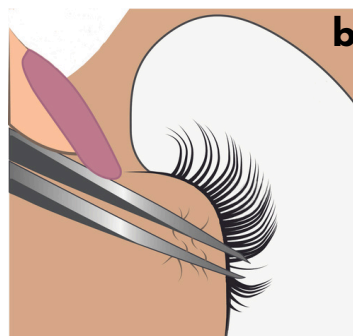
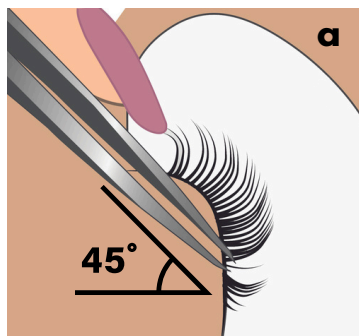
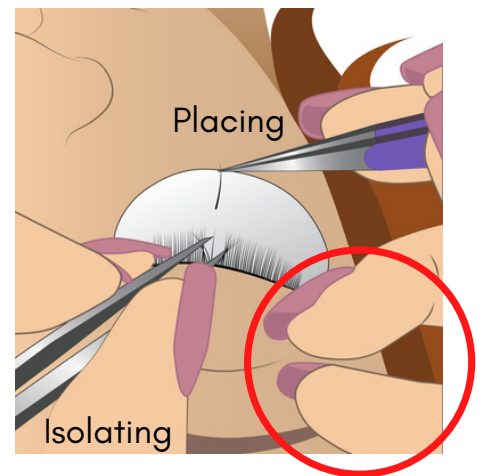
Exercise - compare

- Hold tweezers with thumb and index finger (like a pen)
- Twist/roll them between your thumb and finger
- Add middle finger. Repeat. Experience the difference!



Isolating

- Isolation tweezers: In less dominant hand
- Sharply pointed to weave through natural lashes
- Straight tweezers at a 45 degree angle to face (a)
- Pushing sides against eyelid (b) = overreaching
 - > Move hand closer
 - > Use curved or angled pair (c)



Placement

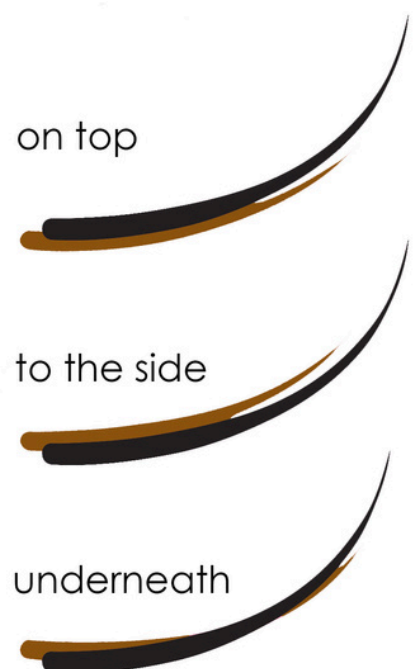
- Pick up / Placement tweezers: In more dominant hand
- Slightly blunt tips = less chance of dropping extensions!

Pick, dip and place

- Isolate natural lash in readiness
- Pick extension, 1/3rd way down from tip = control and ease of placement
- Dip 20% of base slowly in and out of 'top of glue blob'

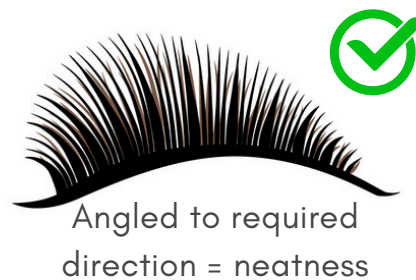
Longer extension = more length is dipped!

- Rest 4th and 5th bent fingers on forehead to steady hand (circled above)
- Place
 - > on top, side or underneath natural lash (shown in brown)
 - > 0.5-1mm **distance** from eyelid
 - > **angled** and **pointing** in the required **direction**



Direction

Extensions should sweep or fan out along the lash line, with tips facing the sky



2 ways

1. Clock face

Sweep to a time shown on a clock face:

Right eye: from 11am at inner to 2pm at outer corner

Left eye: from 10am at outer to 1pm at inner corner

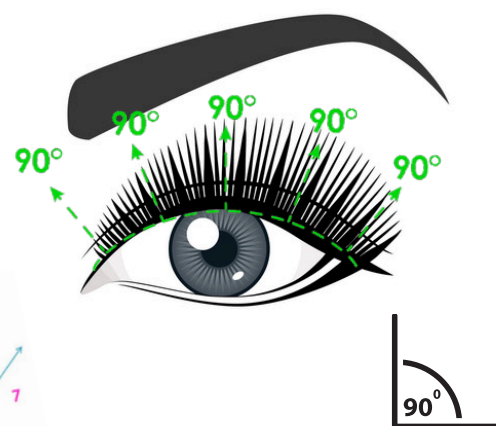
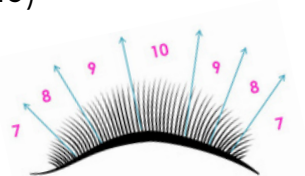


2. Sunrays - 90° (degree)

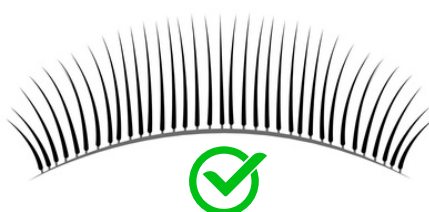
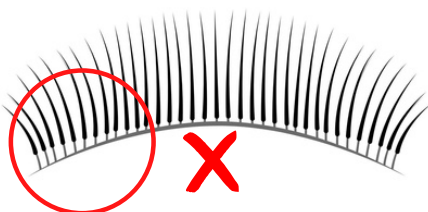
Place at 90 degree angle to the eyelid = fanned like sunrays. Example:

- Lash points to 12pm. 90 degree angle is 1pm
- Attach base on **side** of lash (best side)
- Angle to 1pm, tip facing sky

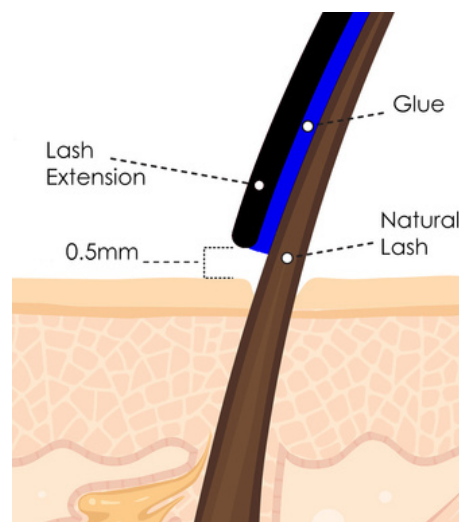
Tip: Add direction arrows to lash map!



Distance



- Bond 0.5mm to 1mm from eyelid
 - > **Closer** = Its base scratches lid, glue sensitivity
 - > **Further** = Less control. Too long. Crossovers/hangs



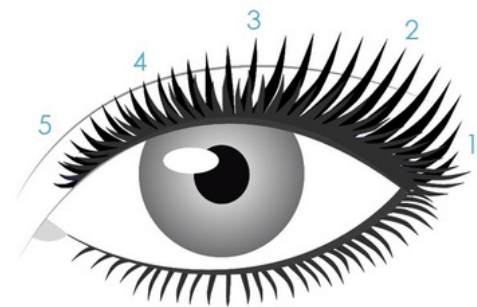
Application structure

Inexperience = wise to be systematic when applying to create evenness.

Easy way

Lashing in sections

- Imagine lash line divided into sections
- Apply 1st extension at the outer corner (numbered 1 in blue)
- Apply next 4 so they're spaced out, working towards the inner corner
- Once 5 extensions applied, can place the next 5 between them so 6th between 1 and 2. . .
- Repeat on the other eye. Then repeat again and again until complete



Advantages:

Doing both eyes in sections at same time:

- Ensures evenness in numbers and positions. Good if you run out of time, especially when inexperienced and slow, or if you need to stop (fall ill, emergency, etc)
- Focusing on 1 eye for a period of time is quicker than moving from eye to eye as there's less movement
- Builds structure, looks full = confidence
- Reduces likelihood of stickies as not moving lashes against recently treated ones

You can apply 1 extension on 1 eye and place the 2nd in a similar position on the other eye. This does take longer as you're moving around more.

Advanced way

Lash to Lash

Start at one end - treat neighbouring lashes.

Disadvantages:

- Greater chance of stickies
- Uneven if you treat as many lashes as you can!
- Unbalanced if you run out of time. . .



Aftercare

Tell them

- What they should do (care for them)
- Why they should do it (encourages them to do it)
- What to expect (shedding and the need for regular infills)

Our lashes generally follow a 3 month replenishing growth cycle. They're infants for their 1st month, then grow to become young adults in the 2nd. They rest for their final month and then shed. We shed 1-5 lashes every day. This makes way for new growth.

If I apply 100 extensions on each eye, half will shed within 2-3 weeks. This is why you need regular infills to maintain your look.

Never

- Use oily products on them like skin creams. It can degrade the adhesive that holds older extensions in place and is hard to clean off
- Use an oil based eyeliner on your upper eyelid, for the same reason
- Put mascara on them. It distorts the lash shape and closes volume fans. Good cleaning is difficult. Poor hygiene can lead to infection
- Use false strip lashes over them. Its glue gets caught in your lashes
- Use eyelash curlers on your extensions. It crimps them
- Pull them. You may pull your natural lashes out too
- Rub them. Your extensions may work their way loose
- Get close to intense sources of heat like a BBQ. It can melt your lashes
- Use a long flamed lighter close to them. It can frazzle the lash tips
- Let just heat treated hair touch your lashes. They may fuse together
- Sleep face into your pillow. Rubbing may work some loose
- Catch them on your clothes or towels. You may pull them out

Always

- Take care when applying and removing your (eye) make up
- Wash your lashes every day with a lash cleanser and rinse with water
- Pat them gently with a clean towel to dry
- Comb them gently with a clean lash brush like a mascara wand
- Cleanse them to remove oil and mucous soon after a tearful spell
- Look after them as you may be charged for any extra maintenance
- Have a top up treatment (infill) every 2-3 weeks to maintain your look
- Arrive for your appointments on time and with clean lashes. We can then apply more lashes during your treatment time
- Contact your Lash Stylist if your medical circumstances change
- Contact your Lash Stylist if you experience any discomfort around your eyes within 2-3 days of any lash treatments
- Have them professionally removed if you would like a break

Facts

- Extensions can be worn indefinitely when professionally applied
- How long they last depends on the growth cycle of your lashes, your lifestyle and your care routine
- It's natural to shed around 3 eyelashes a day from each eye. This is why you need regular infill treatments

Paper aftercare leaflets are available at
www.eliteeyelashextensions.co.uk Subject to Copyright ©

Retention

- Most common problem experienced
- Many blame clients for poor care
- More often, it's what the lash artist has or hasn't done
- Many blame their glue! More likely to be how it's used, along with other factors
- Causes complaints, bad reviews, demands for refunds and retreating (repeat work)
- Leads to lost business, revenue and harms confidence

Treatment aim

Extensions shedding with the natural lash

Retention depends on these 7 key points

- 1. Quality of your application**
- 2. Quality of your products**
- 3. How you use your products**
- 4. How your treatment is cared for**
- 5. Your clients natural lashes**
- 6. Your client's health**
- 7. Your client's lifestyle**

Retention concern reported. . .

Ask them to see you ASAP. Examine their lashes

- Have they shed? = Not responsible or liable. Advise
- Are there untreated naturals with glue traces on? = Responsible and liable. Re-treat

If they've collected lashes, check if the natural lash is attached

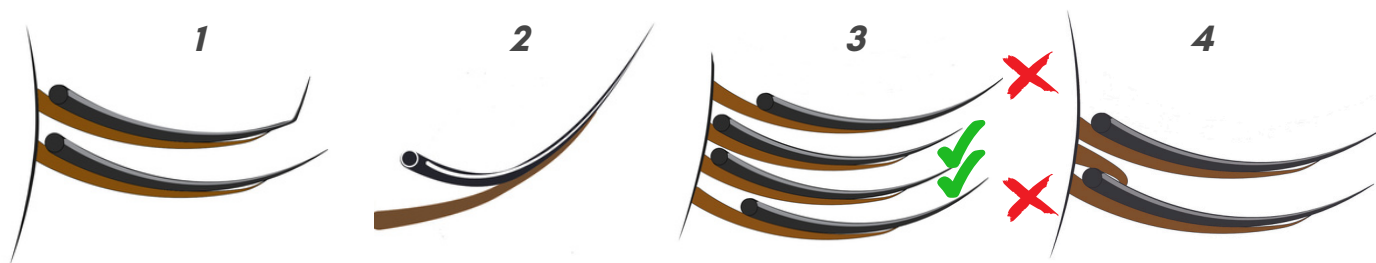
- > Yes = Normal. Not responsible or liable (unless you overloaded = too heavy)
- > No = Responsible and liable. Re-treat

Infills

- Infills recommended within 2-3 weeks
- Frequency depends lash cycle, lifestyle and their look
- Dense looks need more regular infills to keep them full

Check each extension. Any that are:

- 1 Damaged - REMOVE
- 2 Lifting off natural lash - REMOVE
- 3 Grown out, more than 1mm away from eyelid - REMOVE
- 4 Attached to other lashes or extensions (especially infant lashes) - TWEEZE APART



- Once check is done, apply extensions

Note:

- One eye may need more work. Adapt application method (rhythm) to ensure you work more on the eye that needs it

Infilling other people's work

Choice for you. Considerations:

1. Quality may be poor
 - Too much glue
 - Too many stickies
 - Lengths and thicknesses too heavy
 - Style doesn't suit them
2. Can't account for the quality of that work
3. If you infill, you become responsible for the whole set

Removal

Reasons:

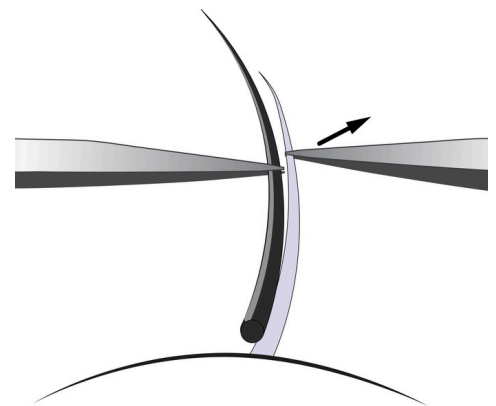
1. Contra-action from a patch test / treatment
2. Starting infill checks (damaged, lifting, outgrown more than 1mm)
3. During treatment, if poorly placed
4. Another lash artists poor work

How

3 safe removal techniques. Done when the client is laying down and their lower lashes are protected with pads or tapes.

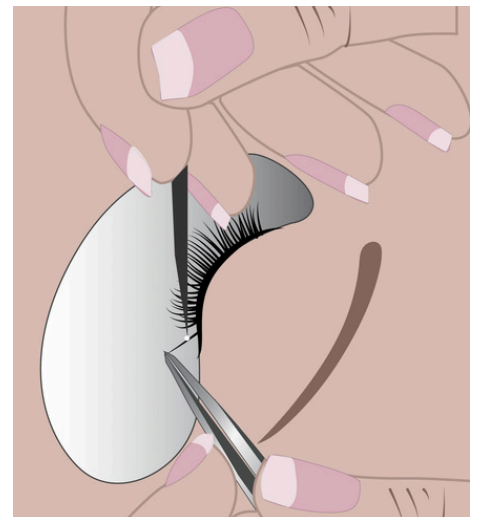
1. Peel

- Grip tip of extension in isolation tweezers and lift it towards you. Don't pull
- Grip natural lash firmly in the other tweezers, close to the bond
- Gently **peel natural lash from extension** - NOT the other way round (avoids pulling)



2. Remove 1 extension with glue remover (debonder)

- Place a little debonder on a glue holder
- Grip extension in isolation tweezers and lift towards you. Don't pull
- Dip the tip of a microbrush in debonder. Apply on the glue bond (shown). Avoid skin
- Swipe microbrush back and forth on the glue. Extension lifts away in seconds. If not, pick up more and swipe again
- Remove all debonder from natural lash. Wedge lash firmly between two flocked applicators and draw from root to tip
- Clean with lash cleanser. Rinse thoroughly



3. Removing most /all extensions with debonder

- Place debonder on a glue holder
- Dip lint free applicator in debonder. Apply on glue bonds only. Avoid the skin
- Leave for 3-5 minutes
- Wedge extensions between clean applicators and drag gently along the extensions. They should easily lift away. Otherwise, apply more debonder and repeat
- Remove all debonder from natural lashes. Wedge firmly between two flocked applicators - draw from root to tip
- Clean with a lash cleanser. Rinse thoroughly

Remember

- Remove **all** traces of the debonder and the adhesive **before** washing lashes as the liquid will shock cure the adhesive, making hard and white from blooming
- Will need to use debonder to remove it!

Debonding facts

- Once thoroughly cleaned, you can treat straight away
- Debonder is an irritant. Use with care
- Available in liquid, gel, cream or clay formulations

Quick Quiz. True or False

- | | | |
|----------|--|----------------------|
| 1 | You can place cling film on the eyes to help speed up the debonding process | <i>True or False</i> |
| 2 | It's okay to 'peel' off a full set of lashes | <i>True or False</i> |
| 3 | Clients may remove their own lashes using oil | <i>True or False</i> |
| 4 | Debonding is subject to COSHH | <i>True or False</i> |
| 5 | If you don't remove all of the debonder that has traces of glue in it, it will cure again when the lashes are washed | <i>True or False</i> |

Sterilisation and Disinfection

- **Cleaning** – mandatory 1st step before disinfection or sterilisation
- **Disinfection** – destruction of most living organisms
- **Sterilisation** – total removal / destruction of all living micro-organisms
- **Sanitised** – blanket term about making something hygienic

Single use disposals = infection prevention control

Tweezers require disinfection level

Sterilisation

Autoclave: Most reliable: Steams at high pressure to 140 °C

Ultraviolet (UV) Cabinet: Radiation method, sterilises exposed surfaces

Glass Bead Steriliser: Works in excess of 200°C. Sterilises small tools in seconds

Disinfectants

Barbicide: Disinfectant solution. Refresh within 24 hours. Soak for 10 mins

Treating young people

- Legal definition of a child: under 18.
- Points to check with your insurer:
 - > Do 16–18 year olds need parent/guardian consent and need to be present
 - > Lower age limit

If they permit treatment to U16, consider if it's safe, professional, appropriate, moral or ethical to treat.

Insurance

Required BEFORE treating. Usually require three forms of liability cover:

- **Product:** retailing products (aftercare). Regulatory compliant (no home brews)
- **Public:** injury or damage to their property
- **Treatment:** Negligence caused injury

Cover required to perform Case Studies.

Data Protection Act 2018

Legal framework = allows individuals to take control of their personal data. Key terms:

- **Personal Data:** Information relating to an identified or identifiable living individual
- **Special Category Data:** Sensitive information that requires more protection.
Relevance: health data we ask during consultations
- **Processing:** What you do with information = Collect, Record, Organise, Store, Erase
- **Data subject:** Identified/identifiable living individual that personal data relates
- **Controller:** Person who determines processing purpose and means
- **Processor:** Person who processes personal data on behalf of controller
- **Filing System:** Structured personal data that's accessible on a computer or paper

General Data Protection Regulation (GDPR): Organisations obligations.

7 principles:

1. **Lawful basis:** For processing (using) personal data
2. **Purpose limitation:** Clear about why you're processing it
3. **Minimisation:** Adequate, Relevant, Limited to necessity
4. **Accuracy:** Reasonable steps to ensure this and correct if needs be
5. **Storage limitation:** Time limited. Insurer = usually 7 years. U18 = until 25th birthday
6. **Security:** Lock away paper records and password protect on computers
7. **Accountability:** You are responsible

Individuals Rights:

1. **Informed:** Personal data process purpose, retention time, sharing (privacy notice)
2. **Access:** Access + receive a copy of their personal data (Subject Access Request)
3. **Rectification:** Correct inaccuracies or fill gaps
4. **Erasure:** Can be 'forgotten' in certain circumstances. Not for 7 years!
5. **Restrict processing:** Can demand it to be stored, not used (e.g. Client Records)
6. **Data portability:** Where transferred, done securely
7. **Object:** Notably, to direct marketing
8. **Automated decision making and profiling**

Data Breaches

- Robust detection. Report certain personal data breaches within 72 hours to the ICO

Quick Quiz

- 1 If you keep notes about general conversations with clients so you remember it for their next visit (for customer service use only), which Principles would you offend?

Quiz Answers



Page 3

- Skin protecting the surface of the eye ('whites'), except the cornea. **Sclera**
- Clear skin covering the iris and pupil at the front of the eye. **Cornea**
- Lining the outside / front of the eye. **Conjunctiva**
- Allows light to enter eye. **Pupil**
- Coloured part is controlling the amount of light entering the eye. **Iris**
- Focuses light to the retina. **Lens**

Page 5

- Large structure at the base of the hair follicle where the growth takes place. **Papilla**
- Comprises of growing cells that divide in its lower part and then pushes up. **Bulb**
- Cells make the melanin pigment. **Melanocyte**
- Hard, outermost part. Dead cells overlap into layers to form scales. **Cuticle**
- The middle layer. Comprises of keratin fibers and melanin. **Cortex**
- The inner most part that contain cells. **Medulla**

Page 7

- 1.True. Usually! It depends on the look being created
- 2.False. Extensions are the wrong name for them!
- 3.True
- 4.True. Usually many more layers = more lashes
- 5.False. Inner and outer corners are usually weaker. Anagen are weaker than other growth phases
- 6.False. Infant lashes are called Anagen
- 7.False. Anagen lashes need to strengthen and mature without being overloaded. Can damage the follicle. Only use a fine, short extension (0.07mm) if needed.
- 8.True. Down facing lashes need lifting more than those that grow and curl upwards

Page 11

- 1.False. PBT lashes called mink or silk. There's also real mink lashes that are not cruelty free
- 2.False. Depends on the thickness of the extensions being used
- 3.False. J and B are soft. D is curly
- 4.False. Hybrid can be Classics and Ready-made volume fans too
- 5.False. D is for dimension
- 6.True. They will look sheer and extremely natural
- 7.True. Shorter lashes = darker look
- 8.True. Helps to stop them poking out!
- 9.False. 8B and 9C will be similar so little difference. Use 10C
- 10.True. Amazing creativity
- 11.True. Amazing for texture

Page 21

- 1.d
- 2.True
- 3.c
- 4.False. Though you could but you risk being uninsured and sued
- 5.True. Always
- 6.False. If they have a positive test (reaction), can't treat!
- 7.True. They must be kept securely
- 8.False. If they are in pain or have visible symptoms, needs Doctors direction otherwise you can aggravate it
- 9.False. It's during treatment as well as afterwards
- 10.False. A clue that they may be sensitive or allergic and we can't test our products as we are not dermatologists!
- 11.b. Never recommend treatments. Refunds are up to you but if you tested and carried out the treatment diligently, you don't have to by law as you carried out a service professionally

Page 27

Squirrel Lash Map

Longest lengths over outer part of iris - usually between middle and outer corner

Close Set Eyes Lash Map

Squirrel or Cat style. Avoid Round or Doll looks as longest lengths in the middle draw eyes together

Wide Set Eyes Looking Elongated

Round or Doll looks as longest lengths in the middle make the eyes look closer together. Avoid Squirrel or Cat style that will accentuate the wide set distance more. Short curly curls along the entire length of the eye will close the lash line up (like a bowl), elongate without extending with short, softer curls at the outer corner instead of curly ones

Page 43

- 1.False. This has not been systematically safety tested. It also risks moving the irritant onto the skin
- 2.False. Peeling should be where the odd lash or two need removing and only then, where the lash will pop off without damaging its host. Debonder is required to remove a full set of lashes and all traces of the glue
- 3.False. Oil will only help to lift those already lifting! Professional removal only.
- 4.True. You need to employ safeguards for storing and use.
- 5.True. A common problem if all traces of the debonder and re-liquefied glue isn't removed before washing

Page 45

1. 3rd. Minimisation = Relevant, Limited to necessity

Equipment

Beauty couch / reclining chair

Couch covers / couch roll

Shallow pillow

Blanket

Stool (height adjustable)

Overhead Lamp

Table/trolley

Disinfectant/Steriliser

Face mask

Hand sanitiser

Products

Lash cleanser

Water

Water dispenser

Tissues

Cotton pads

Lint free applicator wands/brushes

Headband/bouffant cap

Eye pads

Tape (Micropore/Microfoam/Nichiban etc)

Tape dispenser

Microbrushes (1.5mm tips)

Cotton tips/buds

Mascara wands

Lash extensions

Lash holder (Tile or Pallet)

Glue holder

Adhesive

Primer

Isolation tweezers

Placement tweezers

Preparation tweezers

Soft tipped pen

Fan / Air blower

Mirror

Adhesive remover

Good to have

Hygrometer

Dental mirror

Tweezer case

Tweezer lanyard

Wooden spatulas

Nozzles wipes

Pliers (stuck lids!)

Magnifying glasses

Paperwork

Suitability/consent forms

Client record cards

Aftercare leaflets

Step by Step Guide to Lash Application

Preparation



01 Treatment plan - style, look, map



02 Prepare products



03 New contra-indications?



04 Lay down. Check Comfort



05 Apply PPE (mask)




06 Wash your hands




07 Cover their forehead


Treatment




08 Cleanse lashes. Rinse well




09 Apply pads/tape on lower lashes




10 Switch overhead lamp on




11 Visible check for contra-indications




12 Optional: Apply Primer (oily clients)




13 Comb lashes




14 Draw Lash Map




15 Shake glue. Dispense a drop (change regularly)




16 Isolate a lash




17 Pick up extension/s




18 dip 20-25% base in glue




19 Attach: 0.5mm from lid at 90°




20 Hold isolation for a couple of seconds




21 Repeat until complete. Keep eyes closed 5 mins




22 Check: No lashes stuck to pads/tape or lower lashes




23 Check: Stickies & attachment & comb




24 Remove pads/tape




25 Cleanse eye area. Dry and comb




26 Turn lamp off



27 Open eyes. Check for stickies (top & bottom lashes)



28 Sit up slowly. Offer a mirror. Take photo!



29 Take payment & book infills

Finish up